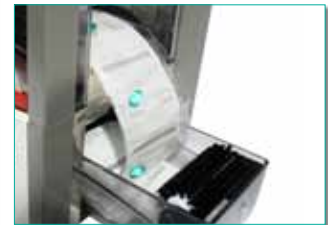
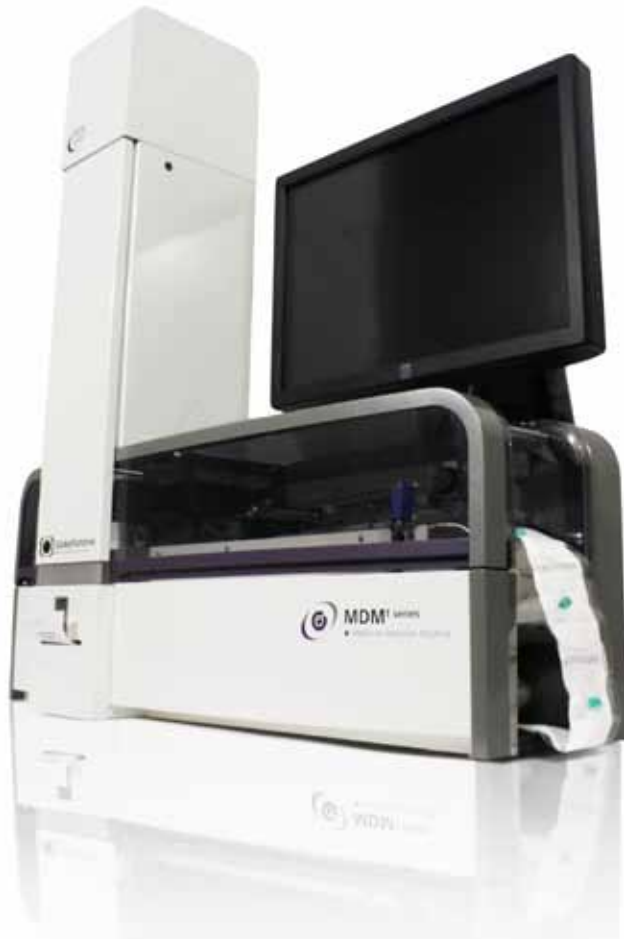



MDM 1 series | Medicine Detection Machine



MDM¹ series ● Medicine Detection Machine

 The MDM 1 series automatically checks patient pouches quickly and securely. It compares each pouch to a library of tablet images and marks for review any pouch that does not have the expected contents. The MDM 1 series has been specially designed for smaller-scale medicine repackagers, including individual pharmacies, hospitals and care establishments.

- All software is integrated
- Stores colour image of each pouch for accountability
- Accurate checking of 48 up to 60 pouches/minute (depending on size pouch)

Technical specifications:

Power: 220V systems - 3.8A / PC power - 3A

Dimensions:

Width: 370mm
Length: 760mm
Height: 830mm
Weight: 67 kg

Global Factories Medical Systems

Javastraat 46-48 T. +31(0)70 308 32 20 E. info@globalfactories.com
2585 AR The Hague F. +31(0)70 329 03 58 I. www.globalfactories.com
The Netherlands